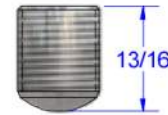
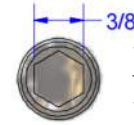
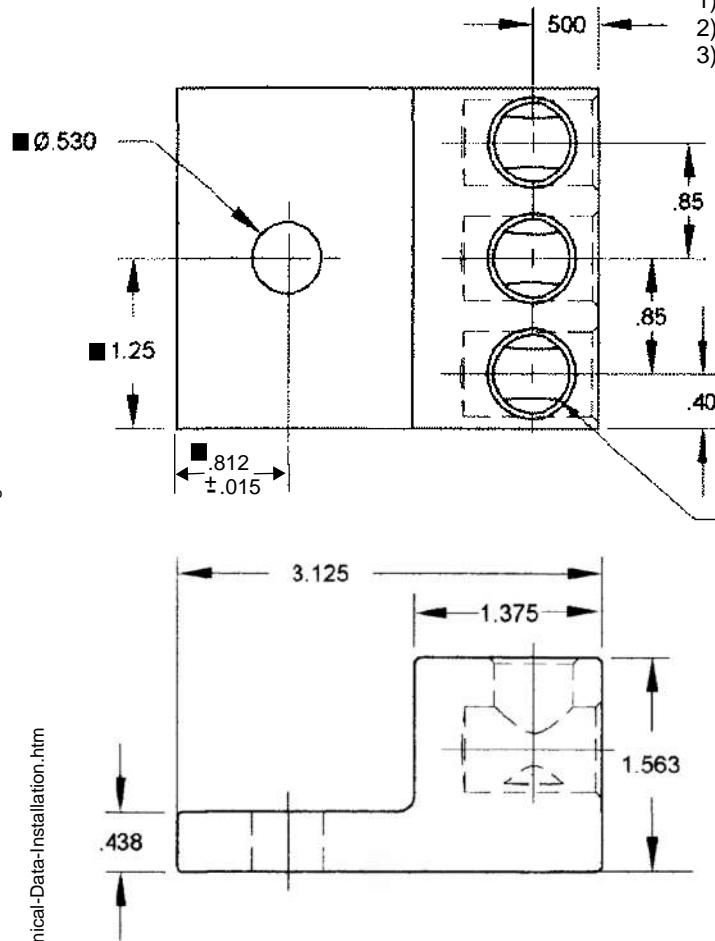


NOT FOR USE WHERE FAILURE CREATES A HAZARD TO HUMAN HEALTH OR SAFETY. ALL PRODUCTS ARE SUBJECT TO THIS FULL DISCLAIMER: <http://www.ihiconnectors.com/disclaimer.html>  
 FOR FURTHER INFORMATION ON THE PROPER USE OF THIS PRODUCT IN SPECIFIC APPLICATIONS SEE <http://www.ihiconnectors.com/GuideToFlexibleFineStrandedWireCableMechanicalLugsFAQ.html>  
<http://www.ihiconnectors.com/Technical-Data-Installation.htm>

IHI UL/CSA Installation Guide to Drill or Enlarge Mounting Holes:  
<https://lugsdirect.com/PDF Documents/IHI-MTG-HOLE-FIELD-MODS-UL&CSA-CERTIFICATIONS.pdf>

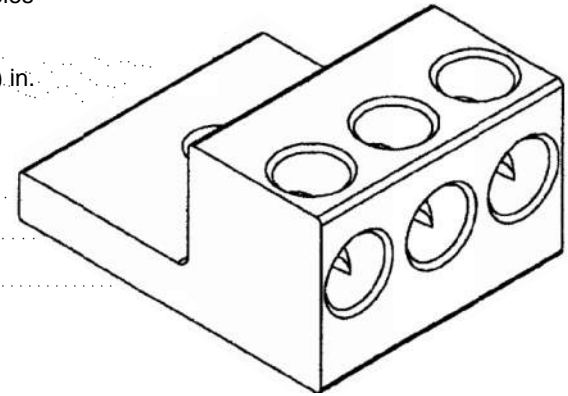
**Cat. No. 2S250 Style No. 2**

- Drill, Enlarge, or Modify Mounting Holes
- 1) Increase hole(s) dia. to 11/16 bolt.
- 2) Move location of mounting hole(s)
- 3) If buying blank lug, put custom hole(s) in.

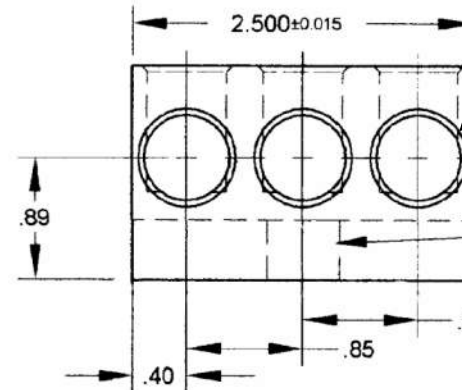


SCREW # 14237  
(ALUMINUM TIN PLATED)

.578  
 5/8-18 UNF - 2B  
 CHAMFER .045 X 45° (TYP)  
 (3 PLACES)



.625 ± .010  $\nabla$  1.120  
 CHAMFER .045 X 45°  
 (3 PLACES)



MARKING TO INCLUDE THE FOLLOWING:  
 IHI 2S250  
 250 KCMIL-6  
 UL CSA CU9AL

DIM IN THIS VIEW  
 FOR REF. ONLY

FLEX WIRE 3/0-6 AWG

THIS DRAWING AND DESIGN ARE THE PROPERTY OF INTERNATIONAL HYDRAULICS INC., CLEVELAND, OHIO, AND MAY NOT BE DUPLICATED, USED FOR BASIS OF DESIGN, OR MANUFACTURE WITHOUT THE WRITTEN PERMISSION OF INTERNATIONAL HYDRAULICS INC., CLEVELAND, OHIO.

**INTERNATIONAL HYDRAULICS, INC.**

GENERAL TOLERANCES  
 ±.015 (±0.038)

TITLE:  
**3S250-53-81  
 connector**

MATERIAL: 6061-T6  
 X23600

SIZE: DRAWN BY: TDS  
 CHECKED BY: XX

DATE: 3/13/2018  
 SCALE: DRAWING: 3S250-53-81  
 REV:

FINISH: TIN PLATE

DATE: 3/13/2018

THIS IS A CAD DRAWING. DO NOT MANUALLY REVISE